



Extreme Duty Filtration Inlet Vacuum Filters SpinMeister® /Dual "T" Style

APPLICATIONS & EQUIPMENT – Extreme Duty Environments

- Screw Compressors
- Woodworking/Router Tables
- Vacuum Systems
- Plastics
- Material Handling Systems
- Pneumatic Conveying Systems
- Food Processing

FEATURES & SPECIFICATIONS

- **Extreme Duty Filtration** for high dust environments
- **Significantly Increases** the life of the filter element
- The centrifugal force from the intake air causes the particulate to separate from the air stream, forcing it to the outer cover perimeter and out through the discharge port.
- SpinMeister™ Precleaner - 85+% efficient up to 15 microns
 - Made of durable molded fiber filled composite material
 - Integrated SpinMeister has reduced pressure drop and eliminates large objects from entering air stream.
- The air stream then enters the **Inlet Filter** and is filtered by a 99+% efficient pleated element
- **See-Through Buckets** for 3" and 4" connections
 - **Significant** dirt holding capacity
 - Clip release shell for Easy maintenance
- Durable black carbon steel buckets for all sizes: 2" to 6" connections
- Polyester: 99%+ removal efficiency standard to 5 micron
- Paper: 99%+ removal efficiency standard to 2 micron
- Positive sealing assembly
- Temp (continuous): min -15°F (-26°C) max 220°F (104°C)

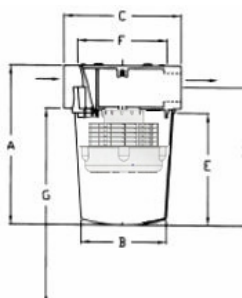
OPTIONS (Inquiries Encouraged)

- Multiple Configurations
 - Inlet "L" Design Filters
 - Inlet Filter Assemblies
- SpinMeisters® available in Polished Aluminum
- VS and VL Series Models
- Larger systems available
Ask about CT 5" & 6" sizes
- Swing Bolts available for all sizes

CONFIGURATION

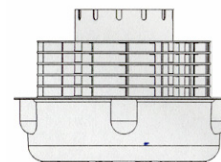


DRAWING



Dimension tolerance $\pm 1/4"$

SCHEMATIC



SpinMeister®
Registered Patent

INLET VACUUM FILTERS
CSL, CT, VL, VS, LRS Series

I = Industrial Duty S = Severe Duty E = Extreme Duty

	with SpinMeister	with Polyester Element	with Paper Element	FPT Inlet & Outlet	DIMENSIONS - inches							Rated Flow SCFM		
					A	B	C	D	E	F	G	Filter w/ SM	Filter w/ Element	Element Only
E	CT-SML235-200C	CT-851-200C	CT-850-200C	2"	13	7 5/8	9	10 7/8	9	5 5/8	2	40-110	175	290
E	CT-SML235-250C	CT-851-250C	CT-850-250C	2-1/2"	13	7 5/8	9	10 7/8	9	5 5/8	2	40-110	210	290
E	ST-SML345-300C	ST-235P-300C	ST-234P-300C	3"	19	9 7/8	13 1/2	17 2/16	14	10	25	100-200	300	570
E	ST-SML445-300C	ST-235P-300C	ST-234P-300C	3"	19	9 7/8	13 1/2	17 2/16	14	10	25	200-450	300	570
E	ST-SML345-400C	ST-235P-400C	ST-234P-400C	4"	19	9 7/8	13 1/2	17 2/16	14	10	25	100-200	520	570
E	ST-SML445-400C	ST-235P-400C	ST-234P-400C	4"	19	9 7/8	13 1/2	17 2/16	14	10	25	200-450	520	570

↑ Buy Above ↑ ↑ In Combo with Either ↑

"ST" denotes New See-Through bucket option
Registered Patent on SpinMeister®.

Note: Model offerings and design parameters may change without notice.

Solberg – Discover the Possibilities
SM23-5213